

Educational Collection



22nd Edition

Table of Contents

About

Universities

ESLSCA uni..... 8

Nile uni.....24

Schools

AIA School..... 32

Kent collage..... 58

Gem Intl school.....64

Nermein Ismail school.....72

ABOUT

A stylized, handwritten signature in black ink, appearing to read 'At', is positioned over the word 'ABOUT'.

Archi touch is a family business, owned by the Kandil family and a member of the "Kandil industries group". Established in 1997, lead now by the second generation with a great passion of design and conscious of employees' well-being, on different levels. Archi touch now is one of the market leaders in the office and home furniture manufacturing industry. Today Archi touch is taking an extra mile by providing clients with design consultation for their spaces along with the main scope.

ESLSCA
University

01

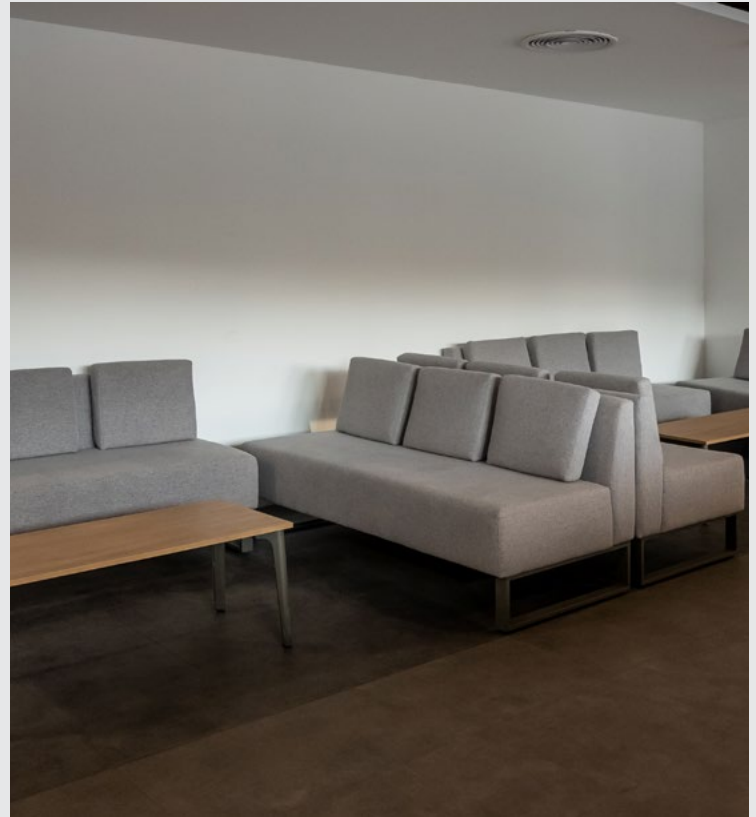


ESLSCA
University

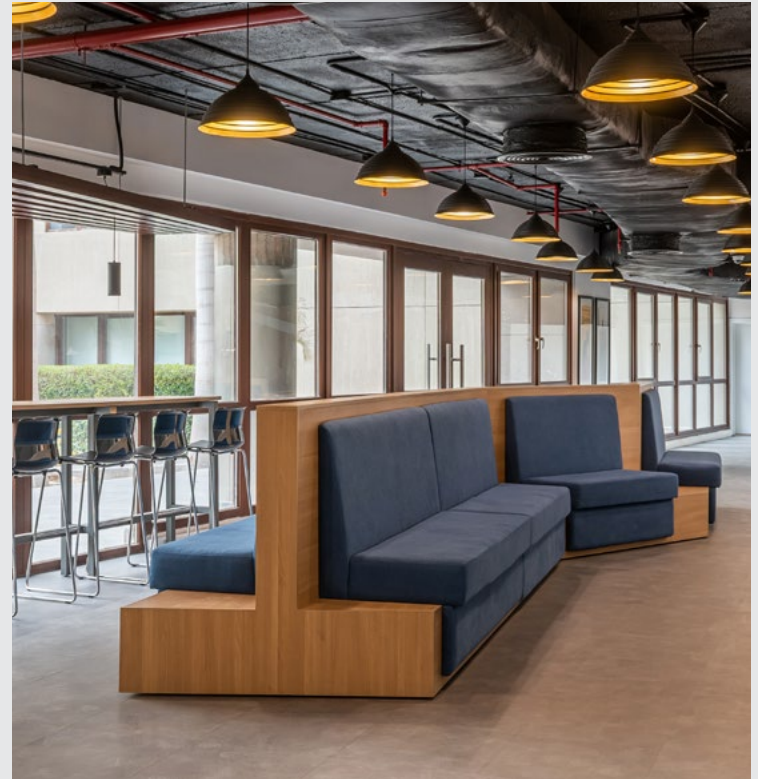
Modern furniture design, our furniture is built to withstand the wear and tear that comes with active student life. Our priority is to ensure efficient and precise installation, project will be completed on time and on budget, every time.



Each area focusing on different student's needs offering maximum comfort and a place to gather and relax.







Featuring sleek design offers a luxurious feel with all the functionality of students' needs.

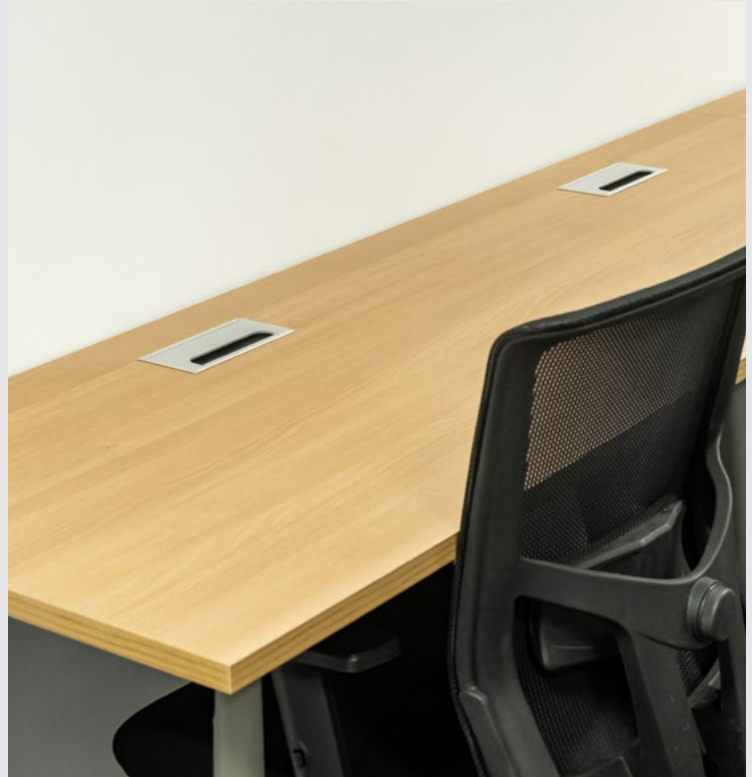




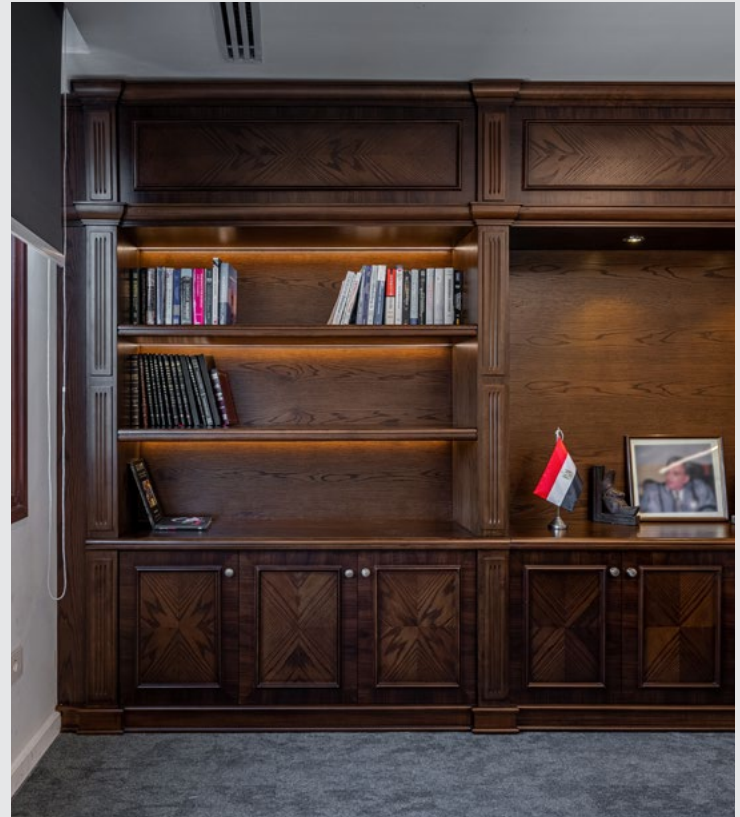


Lounge seating options suitable for student break-outs.





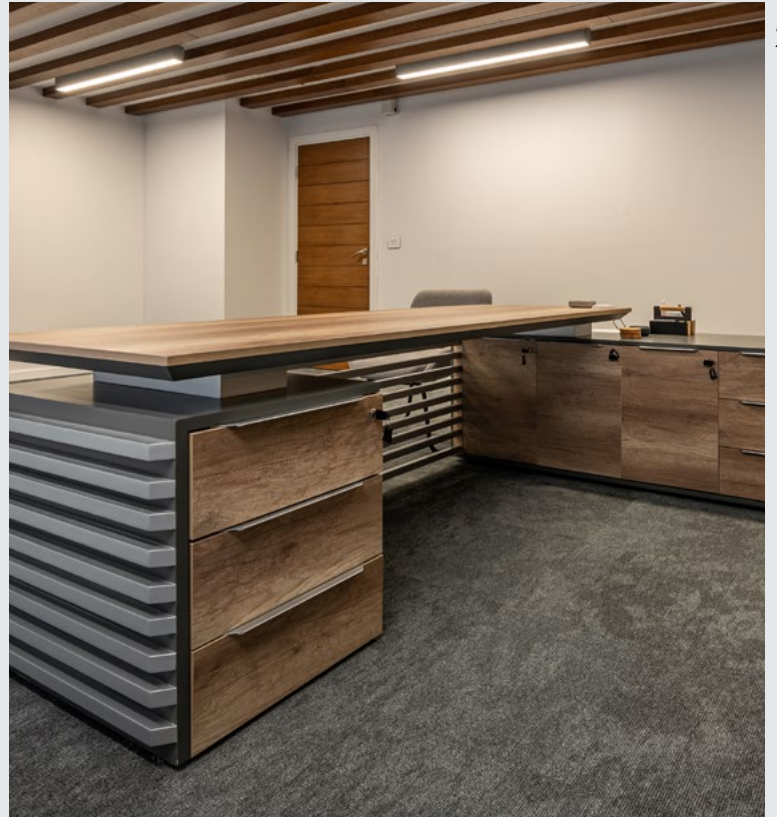
Flexible furniture pieces that meet the many needs of public spaces in colleges and universities.





Mixing different luxurious materials to enrich products' value.





21



NILE

University

01





Administrative workspace designed to get the maximum benefit of the space with the same identity used in the whole university.



Lecture room with fixed educational comfortable chairs provided with movable shelf. And creating lockers and storage units to meet the students needs.





Breakout areas and casual dining for a relaxed break time.



Bootcamp

- Plan topics (Business Technical)
- + trainers
- + timeline
- Check setting + all preparations

Bootcamp Done

Matchmaking

- Contact Bank
- Contact possible investors
- Help in Marketing the Product

Market involved Company

AIA
School

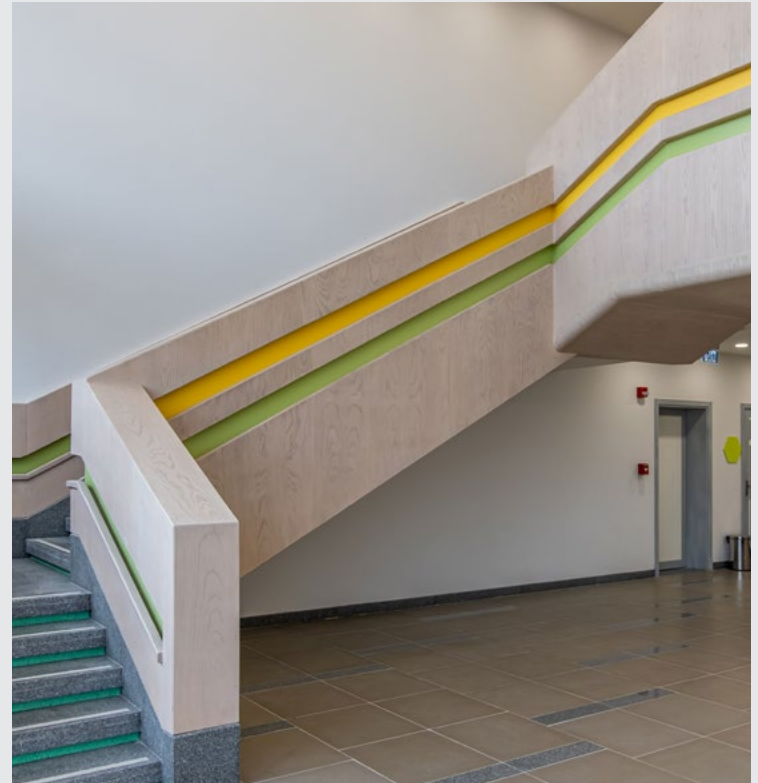
02



When it comes to furnishing a school, it's crucial considering organization and security to ensure that all areas are appropriately outfitted with safe and functional furnishings to protect the wellbeing of students.



School lobby should be comfortable and accommodating for students, parents, guests and school staff.



School Furnishings provides a variety of options for either loose or fixed furniture.





Classroom furniture that is both functional and comfortable as an successful learning environment are the desks and school chairs.







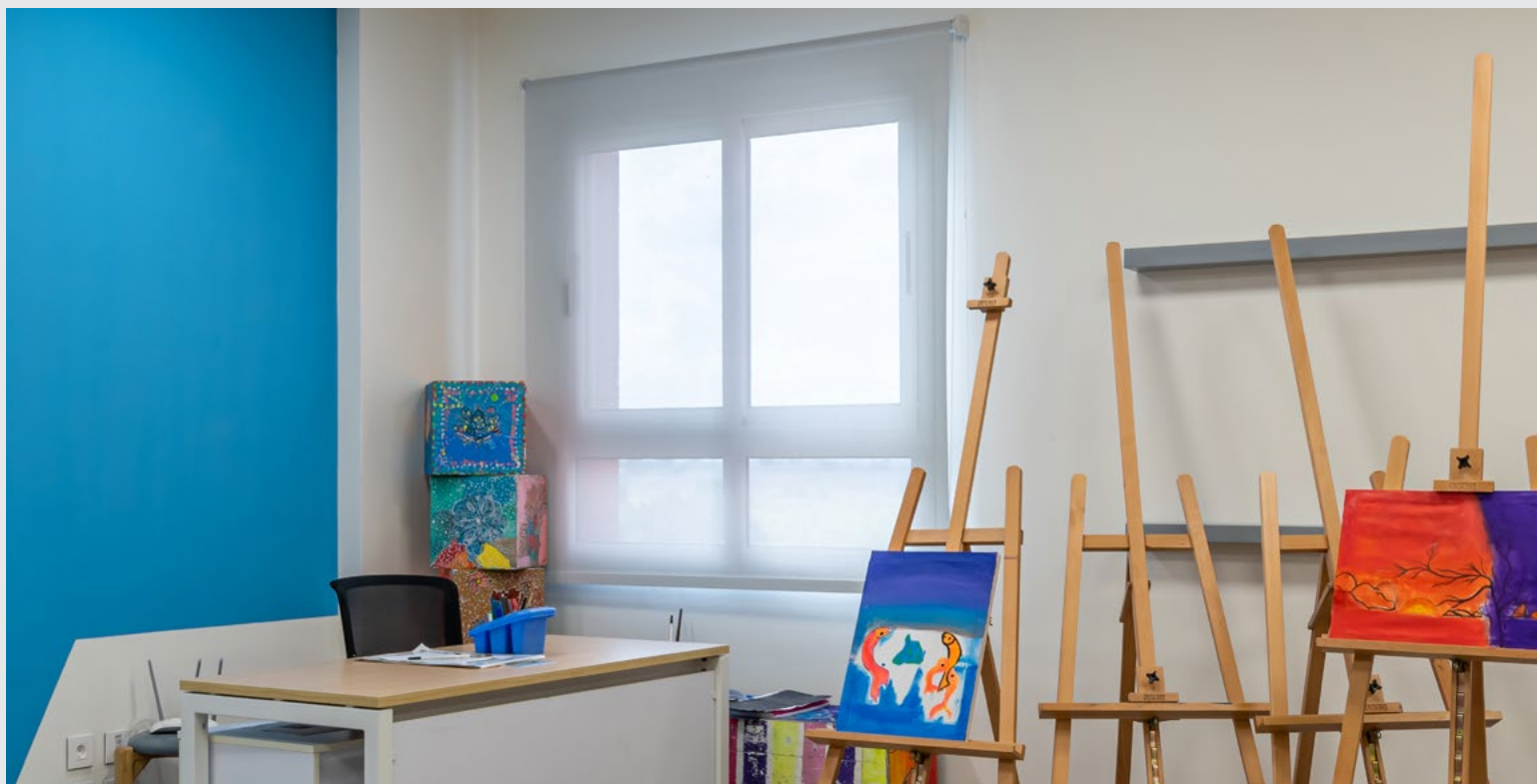




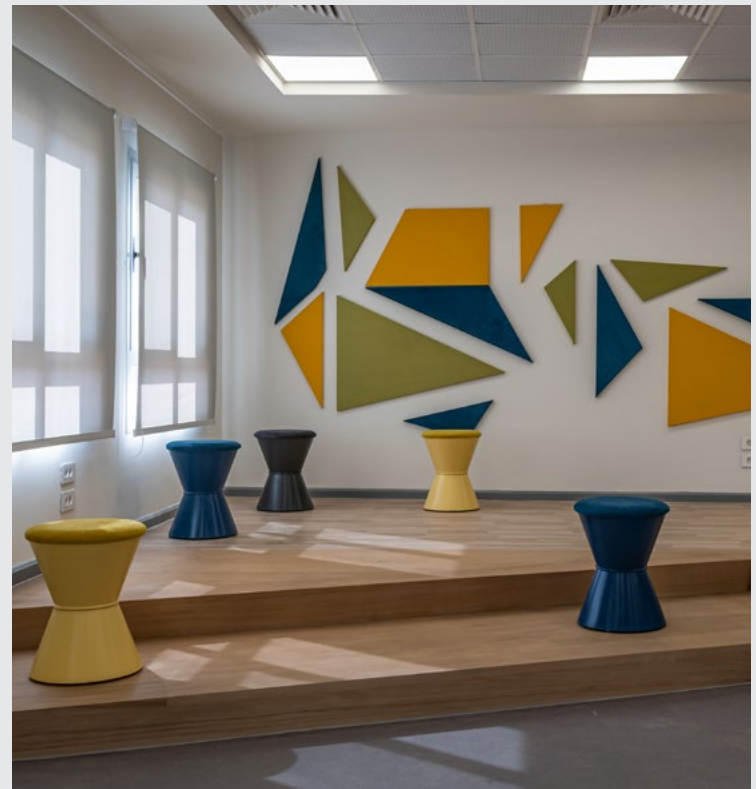
Secondary stage classes as a theme is chosen for each educational stage.



ICT labs and art studios require a unique style of furnishings as well comfortable.



Environment allows students a hands-on experience full of learning and creativity.



Managing each area with the best selected products for their needs and using flexible seating in a lecture room with creative wall cladding.



Managing each area with the best selected products for their needs.



Loose and fixed furniture are applied in different facilities around the school and using them in the most suitable way .





Flexible seating in a lecture room with creative wall cladding. Aiming to seek a design that feels artistic with all the functionality of students' needs.





Comfort meets functionality with our wide selection of high quality and durable school desks.

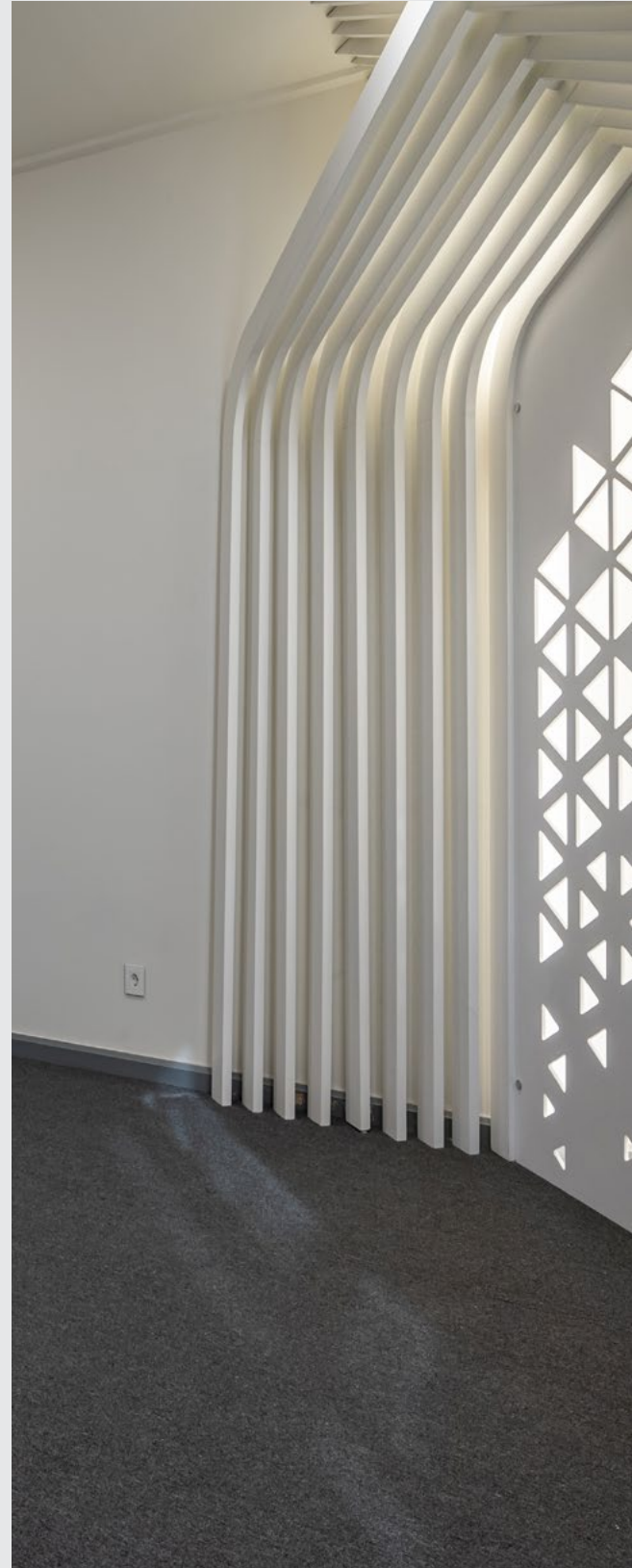


Creating working environment for the stuff that fills them with the energy needed.



Appealing kids to school isn't the easiest but designing a creative room full of fun colors and furnituring and being functional in the same way was the aim.





Designing every space to fit its requirement and function without losing the identity created to each area.







Science labs require different equipment and specific furniture to help the students get the maximum experience out of it.







Smart ergonomic seating in a choice of material, colors and finishes, sized from preschool through adults.



STEAM



All
About
Me





Gems international
school

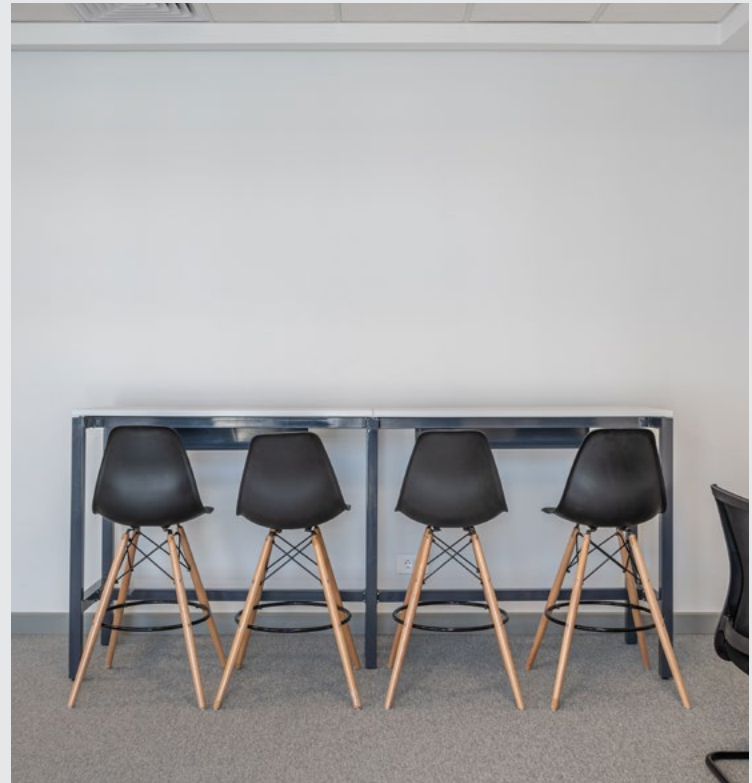
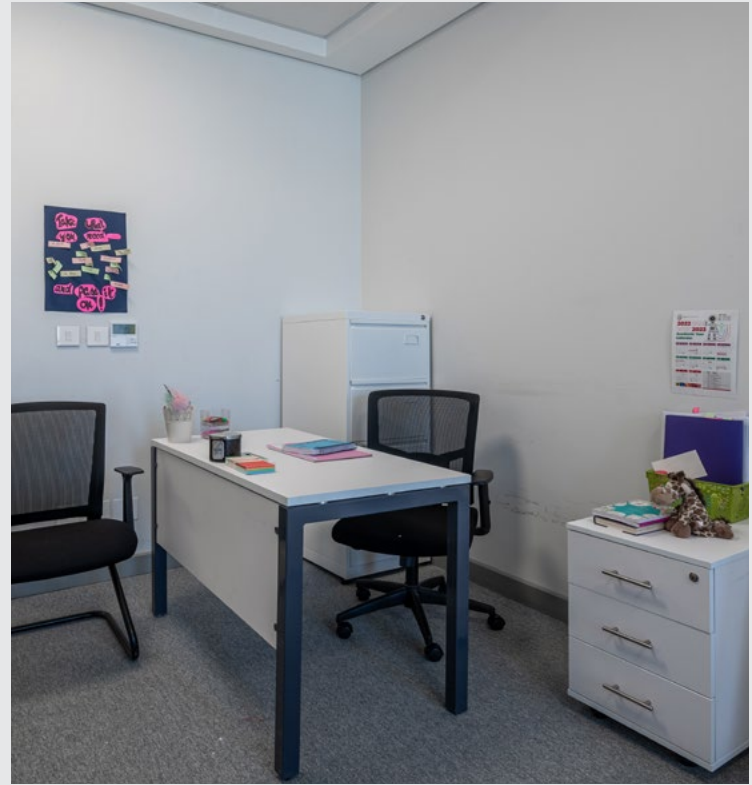
Let our experienced team help in creating learning environments that support all educational needs. Our exclusive products are designed and manufactured to fit in any specifications.



A creative and luxurious reception desk is the best statement for welcoming visitors.







When designing and planning administrative offices and teacher spaces, be sure to make it practical and comfortable.



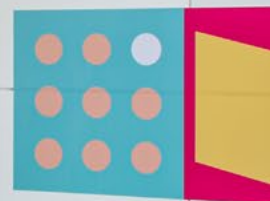


Mixing different materials and colors is to ensure that the environment our children grow up in, is as happy and healthy as they are.



GEMS INTERNATIONAL SCHOOL
CAIRO

WE SEE GE
IN EVER





Nermein Ismail *School*

Interior design plays an important role in many aspects of student learning. From the chair's students sit on to the colors on the walls, design choices have the ability to support an active learning environment. These design elements subtly reinforce a district's commitment toward student success.



Incorporating furniture with interior design elements significantly improve the ambience of the school campus.







A blend of elegant yet comfortable and functional seating solutions that can host numerous guests.

THERE IS NO
ELEVATOR TO
SUCCESS.

YOU HAVE
TO TAKE THE
STAIRS

THE MORE THAT YOU
read
THE MORE THINGS YOU WILL
know

THE MORE THAT YOU
learn
THE MORE PLACES YOU'LL

go



Thank
You



Archi touch is established in 1997 and its a family business, owned by the Kandil family and a member of the Kandil industries group.



info@architouch.com